

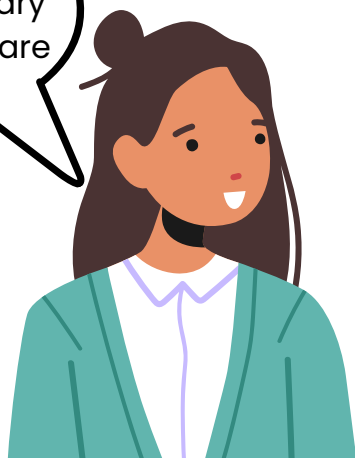
THE EXPLORER



Education and Career Guidance
e-Newsletter for Students (Secondary Edition)

Dear Students,

Have you decided on the post-secondary courses that you are interested in?



Not yet! I can't decide! There are just too many courses to choose from.



Feeling unsure how to select the post-secondary courses for your admissions exercises? In this issue of The Explorer, we will share what you need to know about the post-secondary admissions exercises and programmes so that you will be more prepared when you take the next step in your education journey!

What's trending in this issue?



Industry Watch: Infocomm Technology and Social & Personal Services



Admissions Exercises and Programmes



Broadening the Definition of Success

Industry Watch

In the last issue, we looked at three sectors featured in the ECG Fair at WorldSkills ASEAN 2023 - Transportation & Logistics, Manufacturing & Engineering Technology, and Creative Arts & Fashion.

In this issue, we will take a closer look at Infocomm Technology and Social & Personal Services.



Infocomm Technology



Are you familiar with brands such as Google, Facebook, Grab and Lazada? Singapore is home to many global Information & Communications Technology (ICT) firms and these are just some of them!

Ranked as the world's most digitally-connected country, Singapore offers world-class infrastructure, talent, and a vibrant ecosystem of partners for ICT firms.

Singapore is constantly working with leading companies to develop cutting-edge technologies and solutions to support our Smart Nation vision, as well as regional and global markets.

Social & Personal Services

Curious to know more about this sector which focuses on creating positive experiences and promoting customer well-being?

The Social & Personal Services Sector is a collection of various businesses that offer consumers intangible products or services that are useful to customers, clients, and the general public. These services may include customer service, design, education, maintenance and repairs, healthcare, or positive experiences that provide emotional value and enhance customer well-being.

Sources of Information: <https://www.edb.gov.sg> | <https://sg.indeed.com> / <https://www.mom.gov.sg>



Explore Further!

Explore the sectors above in this SLS resource, 'My Careers Exploration'



Type #ExploreECGSec in the search bar to access all ECG SLS resources!

The Futurist Series

Missed our ECG Fair@WorldSkills ASEAN 2023 held on July 24 and 25? Don't worry, you can catch some of the recorded talks by the industry professionals featured below.

Data Terminator / Infocomm Technology

Do you know that your data remains online forever if you do not take steps to destroy it?

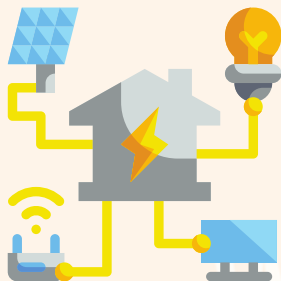


Singapore Fashion Council / Creative Arts & Fashion

Interested to find out more about the fashion ecosystem for a more in-depth understanding of the fashion industry?

Chemistry SG / Creative Arts & Fashion

Do you know what new skills and mindsets designers should adopt as they navigate towards sustainable designs?

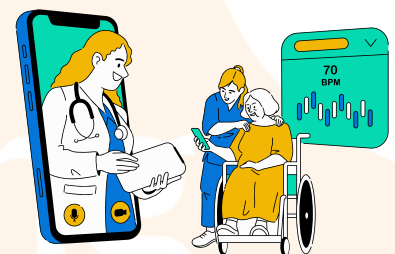


PacificLight Power Pte Ltd / Manufacturing & Engineering Technology

Have you ever thought about the jobs that make sure Singapore's lights are always on?

Ng Teng Fong / Social & Personal Services

What are some dispositions and qualities that a healthcare worker should have? What is a day in a life of a healthcare worker like?



C.H Robinson / Transportation & Logistics

Do you know that freight-forwarding professionals deal with external pressures and make important decisions on a daily basis?

[Click here to watch the videos!](#)



Still wondering about the difference between the JAE and JIE 'O'? Or unsure how to make your 12 choices for the JAE/ JIE 'O'? Get your answers here!

Admissions Exercises & Programmes (GCE O-Level)

What is JAE and JIE 'O'?



The **Joint Admissions Exercise (JAE)** is for students seeking admission to junior colleges (JCs), Millennia Institute (MI), polytechnics and Institute of Technical Education (ITE).

The **Joint Intake Exercise-O (JIE 'O')** allows students who have taken the O-Level examinations to apply directly to the Institute of Technical Education (ITE).

Both the JAE and JIE 'O' are conducted in January after the release of the O-Level examination results. Students may also seek direct admissions to the Arts Institutions.

How should you make your 12 choices for the JAE/ JIE?

First 3 to 4 choices: Consider courses that most align with your Values, Interests, Personality and Skills (V.I.P.S) and strengths.

Next 3 to 4 choices: Choose what you are interested in and stand a good chance of getting into. Consider the last aggregate scores of the courses (where your net score is within the range of last year's aggregate score). You can use **Course Finder** or **School Finder** to find out the aggregate scores.

Last 3 to 4 choices: Include alternative courses and institutions where the last aggregate scores are higher than yours. With this, your chances of securing a place will be higher.

IMPORTANT

Consider all choices carefully and fill in all 12 choices even if you are confident of getting into your desired course!

So how would you make your 12 choices?



Admissions Exercises & Programmes (GCE O-Level)

What are some resources that you can use to make informed decisions about the courses you want to choose for your post-secondary education?

1 JAE / JIE 'O' Website

You can get up-to-date information about the JAE or JIE 'O' processes, key events and deadlines that you will need to look out for when making decisions regarding your post-secondary options.

2 JAE Worksheet

You can fill in your 12 choices before having a conversation with your teachers, parents, or ECG Counsellor.

2024 JOINT ADMISSIONS EXERCISE WORKSHEET

You JAE worksheet is provided to assist you before you do your online course application.

(A) Personal Particulars
Please fill in your personal particulars and update them as necessary in the online system.

NAME: _____
NRIC NUMBER: _____
CONTACT NUMBER: _____
EMAIL ADDRESS: _____

*Your posting result will be sent via SMS to a valid Singapore mobile number.
*Your JAE verification key, which replaces your submitted course preferences, will be sent to this email address.

(B) Course Preferences
You can apply for courses which you meet the eligibility criteria. Please refer to your Form A for course eligibility.

- Course codes and descriptions can be found in www.jae.gov.sg/admissions
- You are strongly advised to make 12 out of the 12 choices, where applicable.

Choice Order	Course Code	Choice Order	Course Code
1 st		7 th	
2 nd		8 th	
3 rd		9 th	
4 th		10 th	
5 th		11 th	
6 th		12 th	

3 SchoolFinder (for JC and MI)

SCHOOL FINDER

You can access school details such as location and JAE aggregate scores, as well as subjects, CCAs and programmes offered by JCs and MI. Use these details to shortlist the schools you prefer.

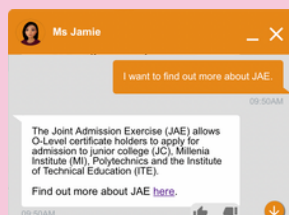
4 CourseFinder (for polys and ITE)

COURSE FINDER

You can explore polytechnic and ITE courses based on your interests and the type of institute. Look out too for details on aggregate type and minimum entry requirements.

5 MySkillsFuture Student Portal - Ask Ms Jamie

Do you need more information about the admissions exercises? Ask Ms. Jamie for help!

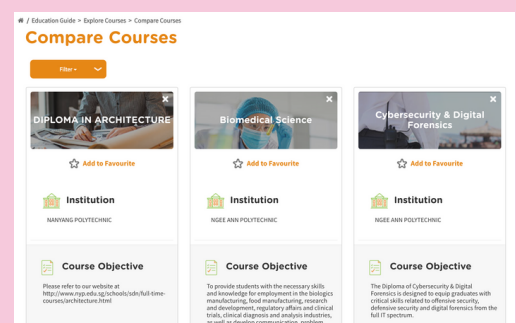


6 Arts Institutions

If you are interested in pursuing a diploma in visual or performing arts you may apply directly to the Arts Institution of interest, i.e. LASALLE College of the Arts (LASALLE) or Nanyang Academy of Fine Arts (NAFA).

7 MySkillsFuture Student Portal - Education Guide

You can compare courses on the portal to identify the ones that you are interested in. Bookmark your preferred courses as favourites to help you shortlist courses for your JAE / JIE 'O' application.



Curious about admissions exercises but confused by acronyms such as DPP, PFP, and JIE?

We've got you covered!

Admissions Exercises & Programmes (GCE N-Level)

What admissions exercises are available for you?

JIE 'N'

The **Joint Intake Exercise-N (JIE 'N')** allows students to apply directly to ITE for a **2-Year Nitec / 3-Year Higher Nitec course**. Students can opt for full-time studies or the Traineeship mode of training, which allows students to learn valuable skills in an actual work environment while earning a salary. In 2024, ITE will offer 25 3-year Higher Nitec courses, allowing students to attain a Higher Nitec qualification directly in three years.

JIE 'E'

The **Joint Intake Exercise-E (JIE 'E')** allows students to apply for the **3-Year Nitec course with Enhanced Nitec Foundation Programme** or the **4-year Higher Nitec with Enhanced Foundation Programme**. Students in the 4-year programme will spend 2 years in the Enhanced Foundation Programme before progressing to the Career Core curriculum in Year 3.

JIE 'H' / DPP

The **Joint Intake Exercise-H (JIE 'H')**, or **Direct-Entry-Scheme to Polytechnic Programme (DPP)**, allows students to enrol into **selected 2-year Higher Nitec programmes at ITE** without having to sit for the O-Level examinations or taking a Nitec programme. DPP students who successfully complete their Higher Nitec courses at ITE and attain the required qualifying Grade Point Average (GPA) scores are guaranteed a place in a polytechnic diploma course mapped to their Higher Nitec course.

PFP

The **Polytechnic Foundation Programme (PFP)** is a **one-year programme** that offers a practice-oriented curriculum taught by polytechnic lecturers, to better prepare polytechnic-bound N(A) - level students for entry into the relevant Polytechnic Diploma courses.

NFP

The **NAFA Foundation Programme (NFP)** is a **one-year practice-based programme** that prepares N(A)-level graduates to pursue a diploma in the creative arts. NFP students who successfully complete the programme will be offered a place in their chosen diploma course at NAFA.

Students in the N(A) and N(T) streams



Students in the N(A) stream only



What are some resources that you can use to make informed decisions about the courses you want to choose for your post-secondary education?

Admissions Exercises & Programmes (GCE N-Level)

1 JIE Website

You can get up-to-date information on JIE 'O', JIE 'N', JIE 'E' and JIE 'H' processes, key events and deadlines.

2 ITE Website

You can find out more about the full-time courses available at ITE:

- 2-Year Nitec
- 3-year Higher Nitec
- 3-year Nitec with eNFP or 4-year Higer Nitec with eFP

3 ITE CourseFinder

You can discover ITE courses by type, location and entry requirements.

4 PFP CourseFinder

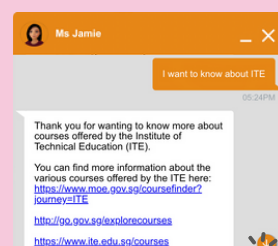
You can discover the courses that are available in the Polytechnic Foundation Programme (PFP), eligibility criteria and refer to the net ELMAB3 range for PFP 2023.

5 NFP Website

You can discover the details of the NAFA Foundation Programme (NFP), including the modules offered, entry requirements and its application process.

6 MySkillsFuture Student Portal - Ask Ms Jamie

Do you need more info about admissions exercises?
Ask Ms. Jamie for help!



Broadening Definitions of Success

There is no fixed definition of success. You are unique individuals with your own strengths, interests, and purpose. Stay open-minded, explore possibilities, and understand that there are pathways to purposeful work for everyone.

Let's watch four students engage in a conversation with Education Minister Chan Chun Sing and learn how different individuals define success at various points in time.



The four individuals featured in the video may not have expected to be where they are now, but they have found meaning in their choices. Click on the links below to read more about their journey.

Switching from polytechnic to junior college: The road less travelled

Enzo Koh, a J2 student at Jurong Pioneer Junior College shares on why he took a leap of faith and transferred from polytechnic to junior college after a year, and how he has grown from the decision.

[READ MORE](#)

His third-choice course at ITE connected him to the first-choice field of robotics

Don't let fear or insecurity stop you from trying new things," says ITE Higher Nitec graduate Muhammad Ezekeyle Ezra, who stumbled from sports science into engineering. He now dreams new dreams in the field of robotics.

[READ MORE](#)

From Latin dancing, he pivoted to gerontology and helping the elderly

Ethan Khoo, a dancer was en route to becoming a personal trainer when he decided to explore a less well-known field, gerontology.

Uncover how this Temasek Polytechnic student found his niche.

[READ MORE](#)

After JC, she takes the polytechnic route to nurture her healthcare dreams

Adilah Binte Affandi was unsure of herself and her career goals when she was a JC student. But the moment she joined the nursing programme at Ngee Ann Polytechnic, it was like a switch had been flipped. Here, she talks about the ups and downs of her education journey, and how she found the path that's right for her, albeit a longer route.

[READ MORE](#)

What is your definition of success?

