



Celebrating emerging  
young architects in  
Singapore

# 2045

— FOURTH EDITION —  
UNDER



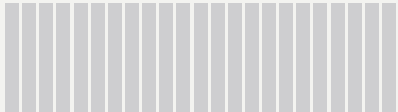
Initiated in 2004, the '20 Under 45' architects programme by the Urban Redevelopment Authority (URA) seeks to recognise and celebrate young and emerging registered architects in Singapore.

Its past three editions (2004, 2010, 2017) have spotlighted 60 architects. Over the last two decades, past recipients have become influential designers in creating impactful works locally and globally, and in doing so, helped elevate the standing of Singapore's architecture.

When the call for submissions was announced in October 2024, the age eligibility was increased to 47 considering significant delays in the commencement and completion of architectural projects due to the COVID-19 pandemic. In the rigorous evaluation by a panel made up of public, private and academic representatives, 23 architects met the selection criteria, of whom three were above the age of 45. The panel unanimously decided not to pare down the list to 20, given the unique challenges architects faced during the COVID-19 pandemic.

Therefore, the fourth edition cohort has increased to 23 (from past cohorts of 20) to support the architecture community coming out of the pandemic and to recognise the exceptional calibre of these deserving architects.

The fourth edition of the '20 Under 45' architects will have the opportunity to design and create meaningful and engaging public spaces. They will share their works, personal journeys and reflections in a publication, exhibition and at public talks planned for early 2026.





Members of the '20 Under 45' fourth edition Selection Panel (with the '20 Under 45' URA team) from left, Tai Lee Siang, Deputy President, Singapore University of Technology and Design, Tan Swee Yiow, President, Real Estate Developers' Association, L'Heureux Erik G., Immediate Past Dean Chai Associate Professor, National University of Singapore, Chan Kok Way, President, Board of Architects, Fun Siew Leng, Chief Urban Designer, URA (Chairperson) and Tan HJ Melvin, Immediate Past President, Singapore Institute of Architects.

“

We are delighted to present the fourth edition of '20 Under 45' architects, marking two decades since its inception. This milestone reflects our strong commitment to supporting our architects to achieve architectural excellence in Singapore. The '20 Under 45' architects' body of works reflects the depth and breadth of our architectural talents and capabilities

in being able to respond creatively and thoughtfully to diverse contexts and challenges. We look forward to seeing the next generation of industry leaders grow from strength to strength and make positive contributions to create a better living environment for all.

Fun Siew Leng, Chief Urban Designer, URA and Chairperson of the '20 Under 45' fourth edition Selection Panel.





Presented in alphabetical order

## Aw Ee Loo, Eugene

Director, 42  
LAUD Architects



Eugene has a wide portfolio, ranging from offices, institutions to childcare centres, residential developments, and churches.

Many of his projects have been recognised, such as the Singapore Life Church at Prinsep Street (Honourable Mention, SIA Architectural Design Awards), Grace Assembly of God (Finalist, 2016 World Architecture Festival) and My First Skool (Finalist, 2024 World Architecture Festival).

Working on the Living Sanctuary Brethren Church was especially meaningful to him. He designed the church's extension to connect sensitively to the existing building. It reflects the existing church's twin Corinthian columns and steeple, which are important to its congregation.



“

In today's world, where societies are becoming more polarised, I believe that architects can help build bridges between people, communities, and ideas. As architects, we need to stay sensitive to what's happening around us, listen deeply and respond with empathy in our designs.







## Chaw Chih Wen

Principal Architect, 46  
Hyphen Architects

Chih Wen worked in New York City and Shanghai before returning to Singapore to start his own firm, Hyphen Architects, in 2015. Throughout his practice, he has amassed an eclectic portfolio of works in various scales and typologies, from homes to hotels. He is also an Adjunct Associate Professor at the Department of Architecture, National University of Singapore.

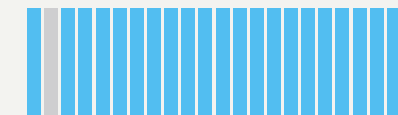
His projects have garnered awards such as the SIA Architectural Design Awards (The Sensible House, Singapore - Best Award for low-density housing) and BCI Interior Design Awards (Manor Hotel, Chiang Mai - Best Hotel in Thailand).



Sensible House  
Image credit: Darren Soh

“

In managing my own firm, I am mindful to stay true to what I believe in and to tune out distractions. To stay resilient, it is important to find the right tribe, those who share your values and passion. Being an educator also motivates me to uphold a practice grounded in strong ideals.





## Chia Yu Hsien

Director, 43

Architecture & Digital Design,  
Building & Research Institute,  
consultancy arm of Housing &  
Development Board (HDB)

Starting with his first built project, designing an orphanage in India while still studying at Carnegie Mellon, Yu Hsien has gone on to develop master plans for Kallang Riverside and the Greater Southern Waterfront (at the Urban Redevelopment Authority) and to design key infrastructure at the Defence Science and Technology Agency (DSTA) including the DSTA Integrated Complex (at DSTA). In his current role at HDB Building & Research Institute, he leads design and research for Build-To-Order public housing precincts, creating more inclusive, sustainable spaces and transforming construction through digitalisation and automation.

His various projects have garnered multiple HDB Design Awards, with some receiving international accolades such as the Global Future Design Award and the IFLA (International Federation of Landscape Architects) Award.



“

Amidst all the excitement about digital and robotics technologies, we must not lose sight of the fundamental purpose of architecture: to create urban ecosystems where people can live, work, and play. To craft environments that inspire and endure, something of longevity in a fast-paced world.





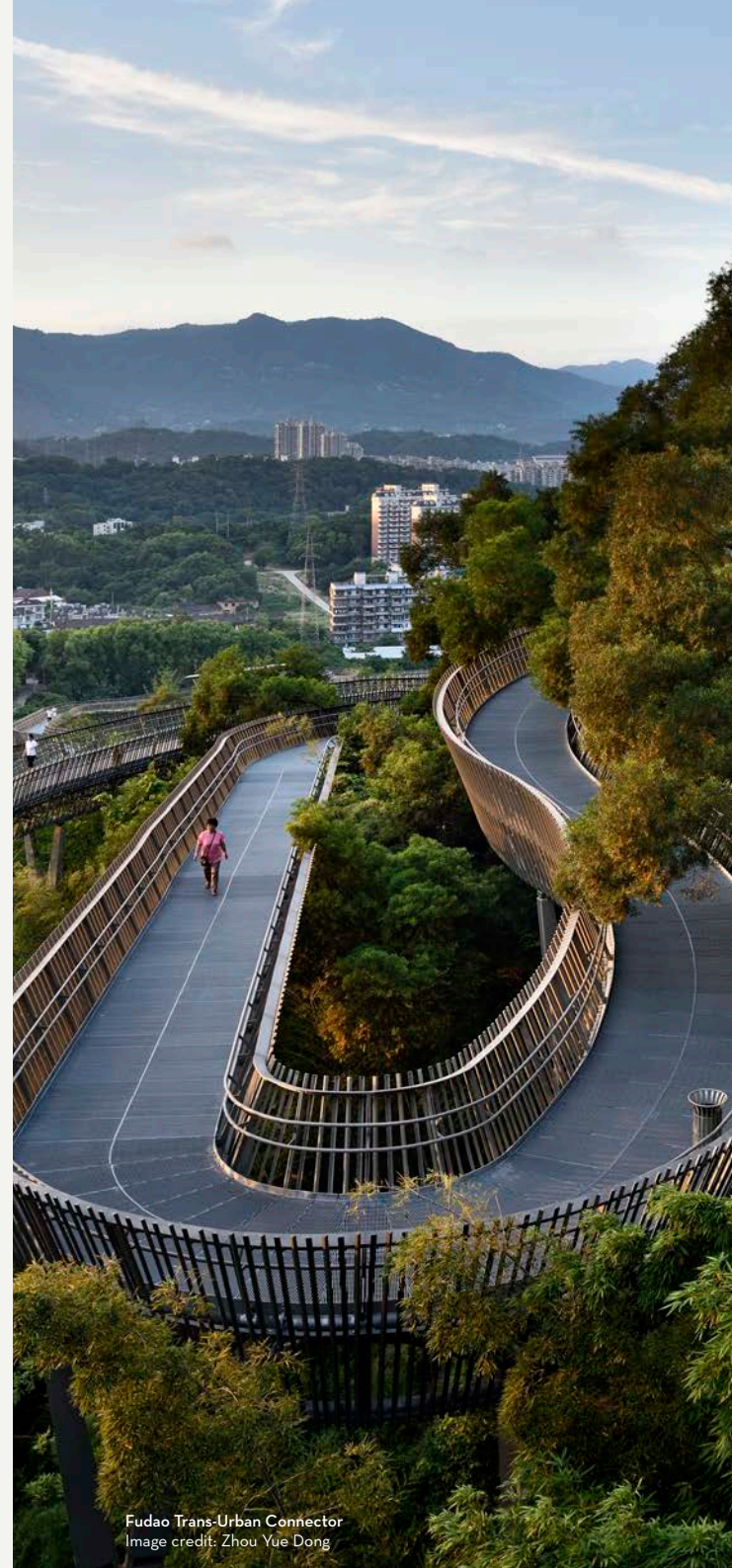


## Chua Liang Ping

Senior Associate, 39  
LOOK Architects

Liang Ping has a diverse portfolio spanning offices, condominiums, public housing, community clubs, nature parks, and urban infrastructure. Taking on more public sector projects in recent years, this has deepened his interest in finding better ways to create more inclusive spaces for people.

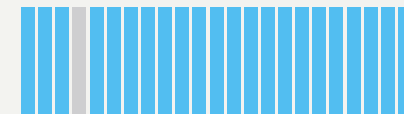
A significant project that he worked on was the Fuzhou Trans-Urban Connector (Fudao), awarded the 2018 President's Design Award Design of the Year. He designed over 19-kilometres of walkways that opened up Fuzhou's historical mountainous landscape, enabling its citizens to enjoy more intimate access to its natural terrain.



Fudao Trans-Urban Connector  
Image credit: Zhou Yue Dong

“

Design is fundamentally a pursuit to solve problems and uncover a sense of order and clarity. When the built form is resolved, it holds a quiet beauty, making architecture feel more instinctive, legible, and accessible to all.





## Fu Zhuo Joe

Director, 36

Ong&Ong Architects

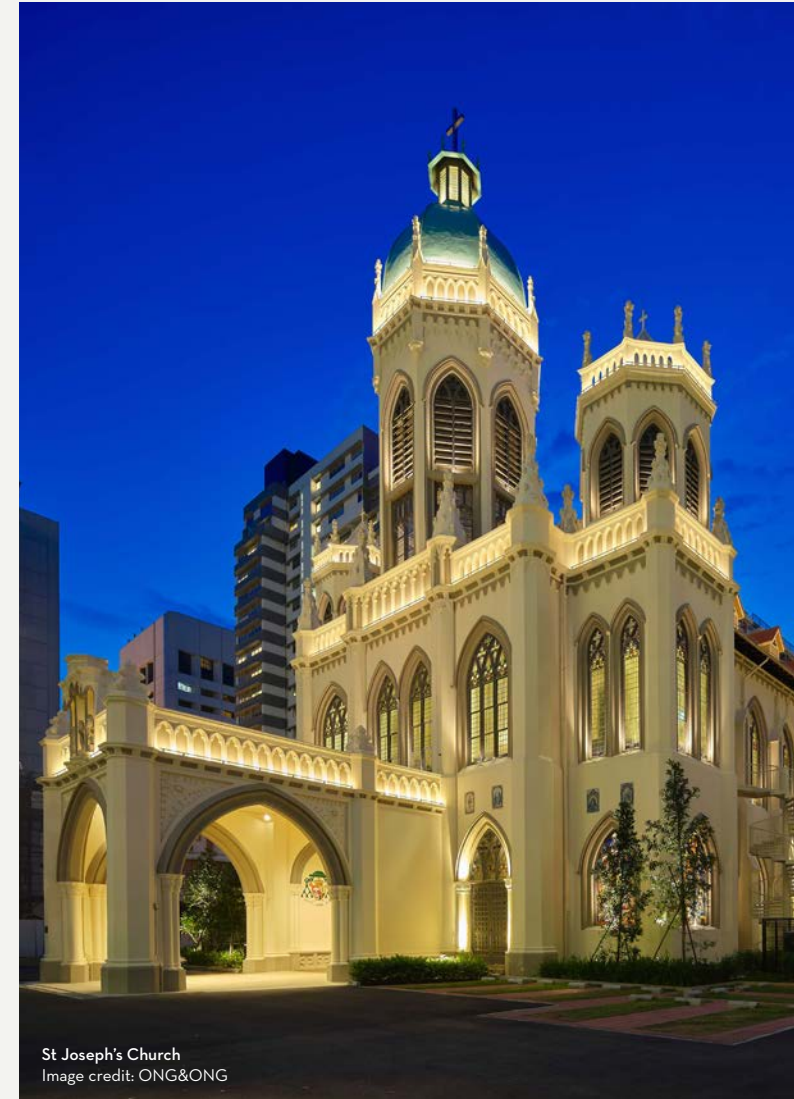


Joe has worked across different types of projects, from the restoration and adaptation of heritage buildings to commercial, institutional, and interiors.

One of the significant projects he has worked on was the restoration of the over 100-year-old St Joseph's Church, a national monument. His work was awarded the 2024 URA Architectural Heritage Award for its sensitive restoration. The project was a learning experience for Joe, who saw that restoration work is not just about building repair. It is also about stewardship, as well as preserving and creating meaning, memory, and identity.

“

In Singapore, making additions and alterations to our existing buildings is an important area of work. It's not always about building something new from the ground up. Often, it's about reimagining what's already there. I think there's a lot of room for creativity in how we adapt our existing spaces. I believe the old and the new can sit side by side without one having to pretend to be the other. When done thoughtfully, this mix can add depth and character to a place.







## Razvan I. Ghilic-Micu

Senior Associate, 39  
Hassell

With two decades of global experience informed by regional insight, Razvan is a passionate champion of regenerative design and radical redevelopment. His award-winning portfolio spans North America and Australasia, encompassing diverse typologies, from commercial mixed-use towers to education and culture. His work has been recognised with awards including Canada's Governor General's Medal, The American Architecture Award, and multiple SIA Architectural Design Awards.

Beyond practice, Razvan has served in the Singapore Institute of Architects as Chief Editor of The Singapore Architect magazine and Festival Director of Archifest 2021. During his Master's at Princeton University, under the mentorship of Liz Diller and Stan Allen, he received the prestigious Henry Adams Award for Excellence in Architecture. For Razvan, architecture is ultimately a cultural act, creating places that are culturally resonant, elegantly simple, and enduringly meaningful for people and planet.



“

One of the great strengths of architecture is that there is no single way to be an architect. The profession offers multiple paths to finding one's authentic voice within a constantly evolving landscape of challenges and opportunities.



## Goy Zhenru

Principal Architect, 38  
Goy Architects

Working on an investigative documentary film about two Thai artists with her father, a retired Mediacorp cameraman, had a profound influence on Zhenru's current approach to architecture, which emphasises cultural sensitivity and telling stories about local cultures.

Her portfolio covers residential, conservation, interiors and other hospitality projects such as Sukasantai Farmstay — an organic farmstay in Indonesia. She is also currently working on the refurbishment of Hotel Everest View, situated within the UNESCO World Heritage Sagarmatha (Everest) National Park in Nepal, where every guestroom offers a view of Mount Everest. Her design pays homage to the local Sherpa culture.

She believes in telling stories through materials. In most of her projects, she works with regional craftsmen to explore how local materials can be reflected in her projects, creating customised elements from tiles to paper screens, artwork, and furniture.



“

Working with local craftsmen and using regionally sourced materials is integral to my design process. It allows me to ground each project in its specific context and culture. Collaborations with local craftsmen enable me to tap into their wisdom. This exchange continually deepens my approach to design, inspiring me to create more thoughtful and responsive work.







## Johandiputra, Andrei

Senior Architect, 43  
Multiply Architects

Andrei has designed a range of developments, including residential, commercial, and mixed-use public projects in Singapore and across Southeast Asia.

Outside of practice, Andrei pursues music as his other interest and plays the violin. He believes that inspiration for design can stem from various life experiences.

Designing the Children's Aid Society Melrose Village (awarded third prize in a design competition) has been most memorable to him in creating a tranquil living environment with cosy village houses and delightful community spaces for the children.



Back-to-Back House  
Image credit: Finbarr Fallon

“

In my architectural designs, I am always looking for ways to inject a sense of wonder and excitement within our everyday spaces that will draw people to places and feel at home.

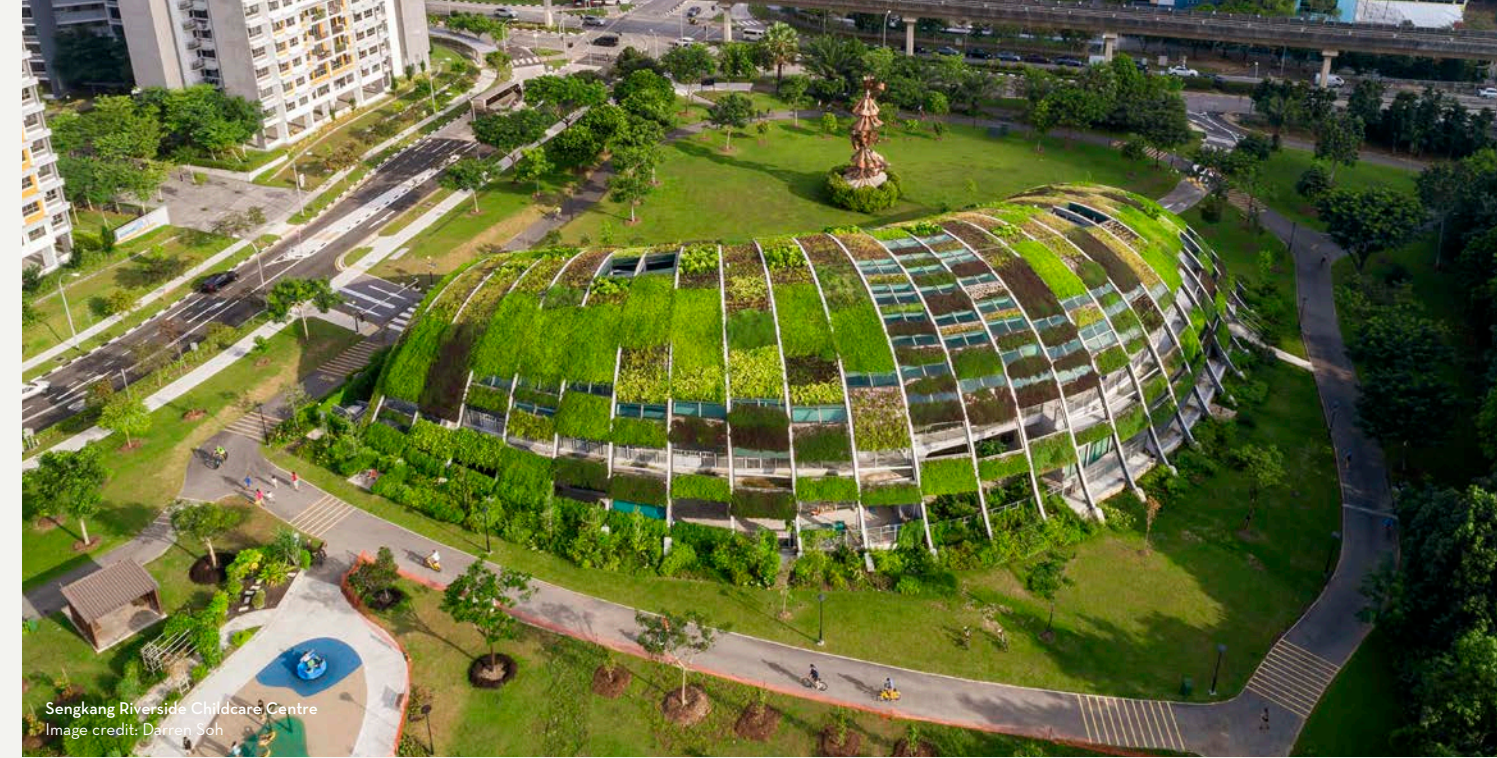




**Kee Jing Zhi**  
Co-Founder, 46  
Freight Architects

Having worked in Singapore, London, and China, Kee, as he is known in the industry, brings a wide-ranging perspective to his work, especially on private homes. Earlier in his career, he was with Wilkinson Eyre Architects in London, where he was part of the design team for Gardens by the Bay in Singapore.

He and his team have designed five childcare centres over the years, contributing to the evolution of childcare centres from conventional learning spaces in void decks to more adventurous typologies. The Sengkang Riverside Childcare Centre is an example. It is a fenceless childcare centre integrated into a public park, enabling children to learn in more open, outdoor spaces.



“

My design approach centres on creating in-between, liminal spaces that mediate between inside and outside. Many of my projects are defined by an outer 'veil' – a transitional layer that responds to climate, context, and experience. This veil is designed using different materials, textures, and levels of porosity – offering shade, enabling cross-ventilation, and creating spaces that are protective and porous.





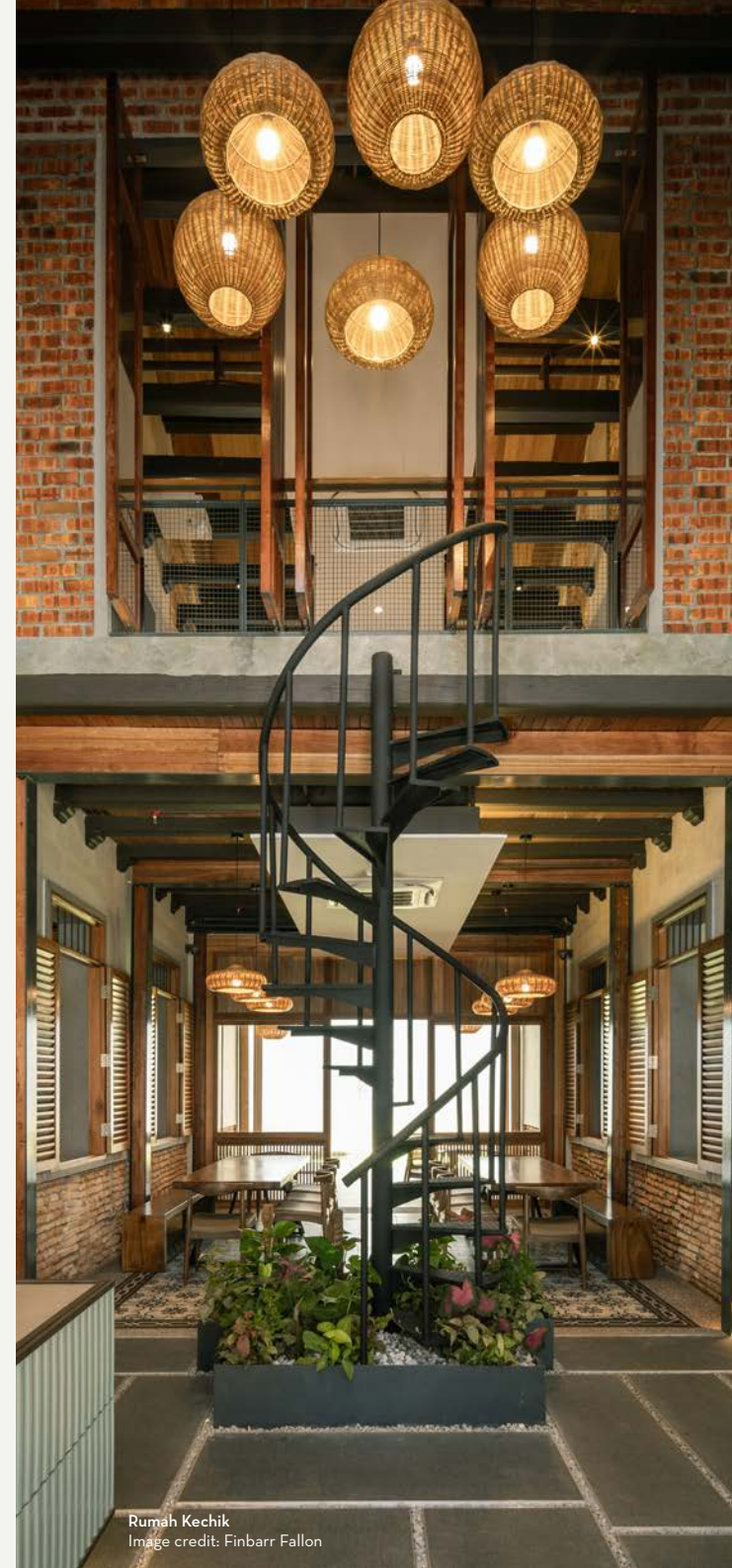


## Keng Xin'en, Melvin

Principal Architect and Founder, 41  
Kaizen Architecture

Melvin started his own practice, Kaizen Architecture, in 2019, exploring the integration of art and culture in architectural designs. His firm covers a range of work, from architecture and interior design to branding and furniture design.

Examples of his firm's projects include Rumah Kechik, the adaptive reuse of a UNESCO-listed shophouse in Malacca; Terrace Flat, a public housing flat; and Ally Singapore, an indoor cycling studio that redefines fitness and wellness. Some of these projects have been awarded local and international awards, such as the 2022 Golden Pin Design Award for spatial design in Taiwan for Terrace Flat, and the 2024 SIA Architectural Design Awards for Overseas Commercial Projects for Rumah Kechik.



Rumah Kechik  
Image credit: Finbarr Fallon

“

I often tell aspiring and younger architects that architecture is a profession where gratification doesn't come quickly – it's an evolving journey that requires patience and perseverance and feeds your creative soul.



## Koh Sock Mui

Director, 44  
RT+Q Architects

Since joining RT+Q Architects in 2011, Sock Mui has played a leading role in shaping some of the firm's most recognised projects with a particular focus on landed homes and multi-unit residences. Before RT+Q, she was with DP Architects where she was part of the Resorts World Sentosa team, contributing to the design and construction of Universal Studios Singapore.

Several of her projects have been recognised such as the House off Cluny, House with a Sanctum and Petit Jervois (SIA Architectural Design Awards in 2016, 2019 and 2022). She also led the editorial team for RT+Q Architects' 20th anniversary monograph, capturing the firm's design legacy and evolution.



“

As people spend more time at home, this has sparked a desire for more thoughtful, well-proportioned environments that enrich the lived experience. In our tropical context, I hope to explore more residential designs which embrace the climate rather than resist it by creating spaces that are porous and naturally ventilated.







## Lee Hui Lian

Founder, 39  
OMG Atelier and  
Associate, FARM Architects

Hui Lian has built up a portfolio covering residential, conservation, and exhibition designs. She founded OMG Atelier in 2021 to deepen her practice.

Her passion for nurturing the next generation of architects and designers inspires her to serve in the Singapore Institute of Architects' Young Architects League and teach at the Department of Architecture, National University of Singapore, as an Adjunct Associate Professor.



Giant Roof House  
Image credit: Ong Chan Hao

“

It is important to stay curious and to immerse ourselves in different types of spaces. Travelling and exploring new spaces have sharpened my spatial awareness and expanded my visual vocabulary. Nothing comes easy – we should take the time to hone our skills and sensibilities to deepen our design practice.



## Leong Lai Ping

Senior Associate, 45  
K2LD Architects

Lai Ping has designed many residential projects in Singapore, Australia, China, Malaysia, and Indonesia.

One of her most meaningful residential projects is The Winged House, a private family home set on a triangular plot and designed to embrace its site and tropical surroundings. Organised around a central garden, the house responds sensitively to light, ventilation, and landscape. Years after it was built, the home was sold but the new owners retained most of its design, making only minor alterations. That same family later approached K2LD to design two additional residences, continuing a relationship built on trust and shared appreciation for design. For Lai Ping, this continuity across nearly two decades is deeply meaningful and affirms the purpose behind her work.



“

In a world increasingly shaped by AI (artificial intelligence), our human touch matters more than ever. Architects must be empathetic, collaborative, and intentional. We are no longer just designers – we are listeners, curators, and visionaries. Our responsibility is to create spaces that are not only beautiful and functional, but enduring and meaningful – for today, and for the generations to come.







## Lim Zi Ying, Cheryl

Senior Associate, 39  
RSP Architects Planners  
& Engineers

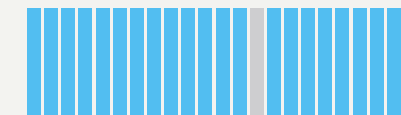
Cheryl has been honing her design skills at various design-centric firms such as CSYA, W Architects, and StudioMilou. She has designed several award-winning projects that adapt existing historic buildings and natural spaces, such as the St James Power Station (at W Architects; 2022 URA Architectural Heritage Award and SIA Architectural Design Awards) and the JTC CleanTech Three (at Architects 61; 2023 Architizer + A Awards, World Architecture Festival Finalist, SIA Architectural Design Awards).

Her designs for both projects were done with a deep respect and sensitive understanding of the buildings and sites, to honour the past and ecological terrain while creating useful and memorable spaces for new uses.



“

The work of architectural design can help us to relook and reframe everyday elements and spaces, to turn the familiar into something new and surprising. Good design can help cut through the clutter of imagery and information to inspire people to still find a sense of wonder and meaning in our physical spaces.





## Lim Pin Jie

Partner, 41  
OMG Atelier

Pin Jie has worked on large-scale developments in China and India at wow | dlab, and residential projects in Singapore and across Southeast Asia at A D Lab, before joining OMG Atelier in 2023, continuing his focus on residential projects.

He believes in contributing to the architectural community, serving as a Council Member with the Singapore Institute of Architects (2016 to 2018) and teaching at the Department of Architecture, National University of Singapore (NUS). He is also part of student mentorship programmes for tertiary students.



“

I've always believed in the importance of nurturing the next generation of designers to ensure a sustainable and resilient architectural community. It is my way of paying it forward. I was fortunate to have had inspiring tutors at NUS, supportive bosses at the start of my career, and caring mentors along the way. I hope that my students and mentees will go on to become mentors themselves.







## Lim Shing Hui

Founder, 41  
L Architects

Shing Hui was inspired by her father's work as a contractor when she decided to pursue architecture. It was her uncle, an entrepreneur also in the building industry, who further encouraged her to take the leap of faith to set up her own practice, L Architects, in 2016.

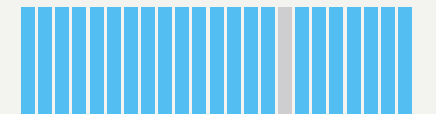
Several of her projects have been recognised, such as the House of Trees, A Brick & Mortar Shop, and 15x3 (2022 SIA Architectural Design Awards Design of the Year and Dezeen longlisted in 2022 and 2024). L Architects was also named as one of the 20 emerging architectural firms by Wallpaper\* in 2024. She is currently serving on the Singapore Institute of Architects Council (2022-2025). Passionate about documenting Singapore's architectural fraternity, she created Genealogy 2.0, a website that presents key information about Singapore's over 300 architectural firms, including their informal close networks.



House of Trees  
Image credit: Khoo Guo Jie



As a small office, I often find that we need to have the acumen to know where we want to apply our efforts. We enjoy exploring how architecture can evoke memory and emotion through thoughtful material experimentation – this often means using very modest materials with precise detailing to elevate ordinary spaces.





## Ng Ching Hsiung

Associate Director, 42  
DP Architects



With DP Architects for 15 years, Ching Hsiung has worked on a range of projects from the River Safari to the HomeTeamNS Khatib Clubhouse and the Downtown East redevelopment.

The River Safari was his first project where he created both immersive experiences for visitors and thoughtfully curated back-of-house spaces for zookeepers to access and tend to the animals effectively. He believes behind every good architectural design is a collaborative process between clients, consultants, contractors and stakeholders.



“

Design doesn't end at the drawing board – it continues to evolve with close collaborations with contractors on site in refining design details to respond to site conditions. This not only implements the design intent but also improves constructability and efficiency. The best outcomes often come when designers, builders, and stakeholders work together, each contributing their expertise towards a shared vision.







## Quck Zhong Yi

Partner, 44  
ASOLIDPLAN and  
Associate Director, RSP Architects  
Planners & Engineers

Zhong Yi has worked in a variety of firms, from the experimental practice R&Sie in Paris, to urban design projects at the Urban Redevelopment Authority, defence architecture at the Defence Science and Technology Agency, small-scale architecture and interior design at Formwerkz Architects and ASOLIDPLAN, and institutional and industrial projects at RSP Architects Planners & Engineers.

He was also an adjunct lecturer at LASALLE College of the Arts and the stage set designer for several National Day Parades (NDP), including NDP2025.



Kerala House  
Image credit: Khoo Guo Jie

“

Spatial design, across all scales, has the power to influence the way we interact with spaces around us and connect us more deeply to places and with one another. I hope to use design to help inspire people to gain bigger perspectives and experiences beyond the confines of the designed spaces.





## Tan Cher Ming

Principal Architect, 43  
Ming Architects



Cher Ming founded his firm, Ming Architects, in 2015, with a strong focus on both architecture and interior design exclusively for residential landed luxury homes. He had previously worked at WOHA Architects, SCDA Architects, and ARC Studio Architecture + Urbanism before starting his practice.

His work has received accolades in various design awards such as Singapore Tatler Homes, Habitus House of the Year, and the International Architecture and Design Awards, among others. The firm is known for its bold and elegant architecture and has been featured in publications such as Archdaily, Archello, Cubes, and D+A magazine.



“

I wanted to become an architect since I was a child. Designing homes gives me great satisfaction in being able to create beautiful and memorable spaces for homeowners.







## Wong Ker How

Founding Partner, 44  
ASOLIDPLAN

Ker How's portfolio ranges from master plans and conservation projects in Singapore to international collaborations, such as a golf course resort in China and a mixed-use project in Sri Lanka, working with global designer and engineer Cecil Balmond.

He actively contributes to the architectural community as the second Vice President of the Singapore Institute of Architects 65th Council (2025/2026) and as an adjunct lecturer at LASALLE College of the Arts and the National University of Singapore. He was also the Co-Curator of the Singapore Pavilion at the 2023 Venice Biennale and Co-Festival Director of Archifest 2024 Singapore.



Breeze House  
Image credit: Studio Zeros

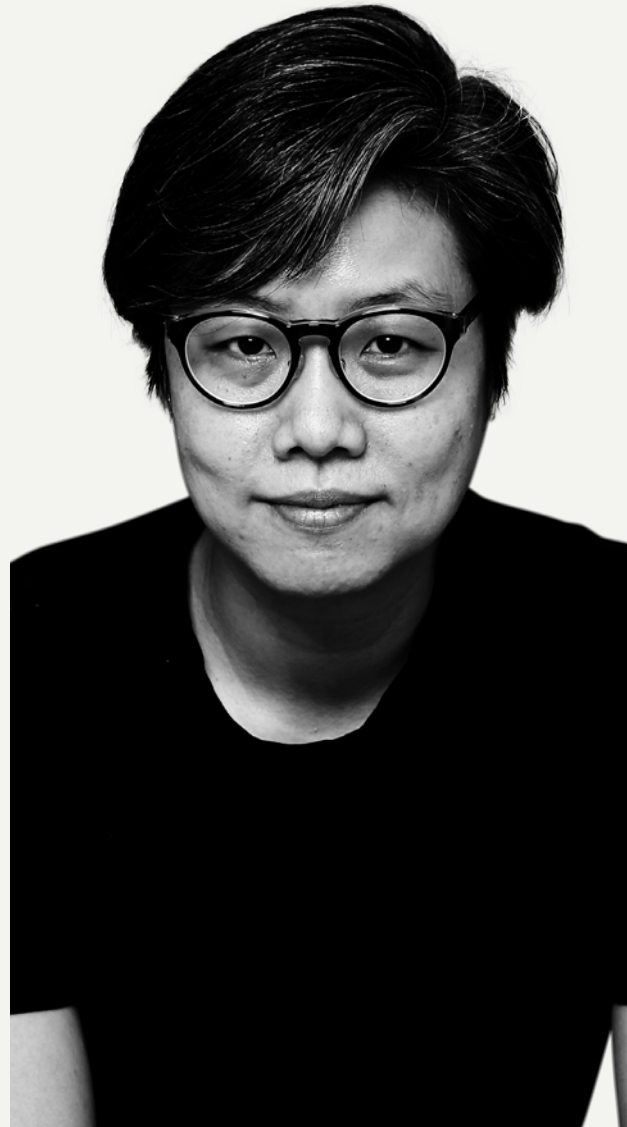
“

I believe designing is about engaging deeply with the complexities of architectural projects, understanding the nuances of materiality, space, and the human experience. Each project serves as a platform to experiment, refine, and challenge preconceived notions of design. As architects, we should actively immerse ourselves in diverse cultural and urban contexts to expand our design vocabularies.



## Wu Yen Yen

Principal Architect, 47  
Genome Architects



Yen Yen's work with Genome Architects covers a diverse range of private, commercial, and public sector projects.

She plays an active role in the architectural community as Co-Curator of the 2018 Singapore Pavilion at the Venice Biennale International Architecture Exhibition and writes and shares about architecture and the city regularly. She served on the Singapore Institute of Architects Council (2016-2023) and is Adjunct Associate Professor, teaching at the Department of Architecture, National University of Singapore since 2009.



Singapore Botanic Gardens Visitor Kiosk and Boardwalk at EcoLake  
Image credit: Khoo Guo Jie

“

Architects bring a humanistic and systematic way of thinking that is informed by our training. I believe that aesthetics and pragmatism are not mutually exclusive. Well-designed buildings should be useful, engaging, and beautiful.







## Yeo Hwee Hua, Alina

Director, 44  
WOHA Architects

With WOHA Architects for 20 years, Alina has designed several award-winning schools, such as the School of the Arts, Singapore (SOTA), the Singapore Institute of Technology (SIT) Campus Heart, and BRAC University in Dhaka, Bangladesh.

SOTA was thoughtfully designed to create cooler spaces with linear breezeways, green walls and sky gardens for a more comfortable learning environment in the high-density inner city vertical school. The Singapore Institute of Technology Campus Heart located within Punggol Digital District is designed as a Campus-in-a-Park, prioritising people, nature and sustainability.

Awarded the 2019 Young Green Architect Award by the Singapore Green Building Council, she leads many of WOHA Architects' design competition submissions, exhibitions, and research work.



“

It was my 13-month internship at WOHA in 2002 that influenced me to further pursue architecture. The firm's rigorous approach to finding design solutions and test-bedding new ideas inspires me to continue to push new boundaries in designing architecture that can elevate people's lives.





## Yong Mien Huei

Senior Architect, 41

Wallflower Architecture + Design



Mien Huei has worked on many residential projects. Some of her projects have won local and international awards, such as the House Category at the 2024 World Architecture Festival and the 2024 SIA Architectural Design Awards.

In many of her residential designs, she seeks to bring nature closer to homes by making greenery an integral part of the homes she designs.



Successful integration of greenery in homes begins with understanding the homeowner's relationship with nature – their appreciation for greenery, the willingness to care for it, and how it complements their lifestyle. True integration goes beyond curated beauty; it embraces the fullness of greenery – its textures, growth, seasonality, and even its unpredictability. When these elements are welcomed into domestic spaces with intention, they elevate the sense of serenity and rootedness, making the home feel more alive and connected to its larger environment.





# Past '20 Under 45' recipients

Presented in alphabetical order

## 2004 (First Edition)

- 1 Allan, Jeffrey Stuart
- 2 Chan Keng Chong, Randy
- 3 Chan Soo Khian
- 4 Chan Wai Kin
- 5 Chang Yong Ter
- 6 Chu Lik Ren
- 7 Ho Sweet Woon
- 8 Huang Wan Jing, Belinda Agnes
- 9 Khoo Peng Beng
- 10 Ko Shiou Hee
- 11 Look Boon Gee
- 12 Siew Man Kok
- 13 Taher, Aamer
- 14 Tai Lee Siang
- 15 Tan Hock Beng
- 16 Tan Kok Hiang
- 17 Tan Ming Yew, Kevin
- 18 Teh Joo Heng
- 19 Wong Mun Summ
- 20 Yong Ai Loon

## 2010 (Second Edition)

- 1 Chan, Angelene
- 2 Chan Ee Mun
- 3 Chea, Nary
- 4 Goh Choon Hock, Martin
- 5 Hassell, Richard
- 6 Lee Chay Pew, Patrick
- 7 Lim Chew Meng, Vincent
- 8 Lim Ghin Choon, Steven
- 9 Lim Yew Tiong, Frven
- 10 Ling Hao
- 11 Liu Yaw Lin, Warren
- 12 Ong Tze Boon
- 13 Seetoh Kum Loon
- 14 Tan Chee Kiang
- 15 Tan, Rene
- 16 Tan Shao Yen
- 17 Tan Tze Suen, Gwen
- 18 Tay Shiaw Shih, Alan
- 19 Teng Choon Aik, Ben
- 20 Yong, Philip

## 2017 (Third Edition)

- 1 Chia Lay Kuan
- 2 Ho Tzu Yin
- 3 Khairudin Saharom
- 4 Ler Bing Huan, Lawrence
- 5 Lim Yin Shi
- 6 Ng San Son
- 7 Ong Chin-Po, Jerry
- 8 Ong Ker-Shing
- 9 Phua Hong Wei
- 10 Pung Whei Huong
- 11 Quek Shao Sheng, Jonathan
- 12 Seah Chee Huang
- 13 Soon Choon Siong, Donovan
- 14 Tan Hua Jin, Melvin
- 15 Tan Teow Leong, James
- 16 Tang Kai Vern
- 17 Teo Yee Chin
- 18 Thean Poh Lian, Christina
- 19 Tiah Nan Chyuan
- 20 Wee Wei Wen, Mark

## Selection Panel for the fourth edition of '20 Under 45' architects

- 1 Fun Siew Leng, Chief Urban Designer, URA (Chairperson)
- 2 Chan Kok Way, President, Board of Architects
- 3 L'Heureux Erik G., Immediate Past Dean Chair Associate Professor, National University of Singapore (NUS)
- 4 Tai Lee Siang, Deputy President, Singapore University of Technology and Design (SUTD)
- 5 Tan Swee Yiow, President, Real Estate Developers' Association of Singapore (REDAS)
- 6 Tan HJ Melvin, Immediate Past President, Singapore Institute of Architects (SIA)



# 2045 UNDER

FOURTH EDITION

Published August 2025