

# DISCOVER YOUR FUTURE WITH THE PATHWAY NAVIGATOR!



This newly launched interactive tool on the MySkillsFuture Student Portal is your personal guide in exploring your journey from primary school to post-secondary education, lighting up your pathway with exciting possibilities.

## PRIMARY



### Primary 6 Years

Posting Groups will only be used for the purposes of admitting students into secondary school and to guide the initial subject levels students can offer at the start of Secondary One.

Select a PSLE score to see which posting group(s) you are eligible for.

#### Primary School Leaving Examination (PSLE) ⓘ

4-20

21-22

23-24

25

26-30

Posting Group 3

Posting Group 2

Posting Group 1

Click ⓘ for more information on PSLE scores.

#### Your selection

PSLE

21-22



Posting Group 3

Posting Group 2

All selections will be reflected in the panel on the right.

## SECONDARY



### Secondary 4/5 Years

At the end of Secondary 4, you will sit for the SEC examinations, at your respective subject levels (i.e. G1, G2, G3).

Select one subject combination to see your post-secondary options. Click again to deselect and choose another.

#### Full Subject-Based Banding (Full SBB) Experience ⓘ

At least  
5 G3 Subjects

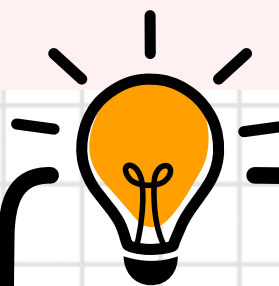
At least  
4 G3 + 1 G2 Subjects

At least  
5 G2 Subjects

At least  
4 G1 Subjects

Click ⓘ for more information on Full SBB.

Select a subject combination to view the eligible post-secondary education pathways.



To explore a different subject combination, deselect the original option before reselecting the new subject combination.

## POST-SECONDARY



### Post-secondary

Post-secondary education comprises the paths you can take after you complete your secondary school education.

Upon graduation from a post-secondary education institution (PSEI), you can continue to another PSEI or pursue further education, depending on your interests, strengths and learning goals.

Click on the coloured boxes for the further education pathways that you are eligible for. Click again to deselect and choose another.

These pathways are just the beginning. Embrace lifelong learning to grow, hone your skills and shape the future you envision.

#### Higher NITEC

#### A-Levels

#### Diplomas



Higher Nitec Course  
(2-year pathway)



Junior College  
(2 years)



Institute of Technical  
Education Diploma



Polytechnic Foundation  
Programme



Polytechnic Diploma Course



Higher Nitec Course  
(3-year pathway)



Millennia Institute  
(3 years)

Click for more information on each post-secondary education pathway.

Eligible post-education pathways from the selected subject combination above will light up.  
  
Select a post-secondary pathway and the relevant pathway(s) will light up.

## WHAT'S NEXT?



### What is next?

What would you like to do next?

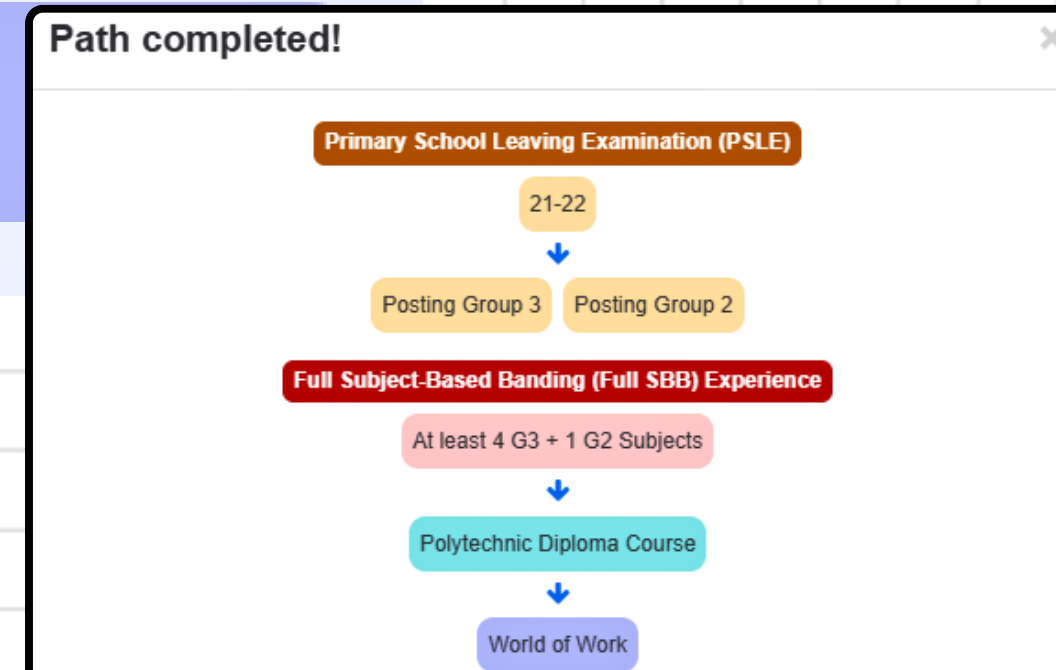


University



World of Work

Upon selecting 'World of Work', a summary of the selected education pathways will be provided.



SCAN ME  
for video guide

