



# Your project falls under the category of CONSTRUCTION ACCOUNT WORKS

My firm carries out the **construction account works** such as facilities management, lift & escalator maintenance and upgrading, construction site maintenance / vector control, cable detection, trial trenching work, replacement / repair works and defects rectification during DLP.

(as of 28 October 2020)

## STEP 1 CHECK IF YOUR COMPANY NEEDS TO APPLY FOR APPROVAL

**Your company employs only Singapore Citizens, Singapore Permanent Residents and Employment Pass holders:**

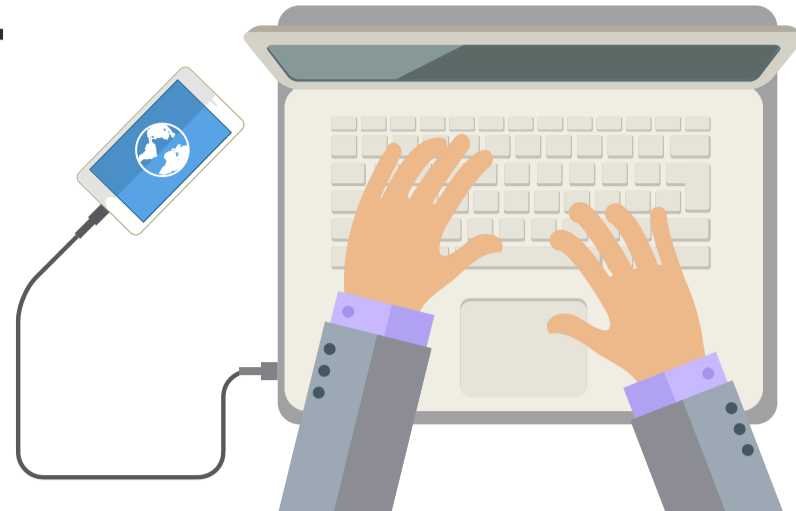
- Apply for 'General Exemption' with MTI: <https://go.gov.sg/generalexemption>. Application to BCA is not required.

**Your company employs foreign workers registered under Construction Account<sup>^</sup>:**

- Application to BCA is not required\*.
- If your workers work in construction sites or supply work premises, application to BCA is required. Refer to Step 3.

\* BCA has given permission for firms with Construction Account workers to resume work with effect from 10 August 2020, provided that work is not carried out at construction sites / supply work premises, and subject to conditions set out in <https://go.gov.sg/bca-circular-resumption-safe-accm>

<sup>^</sup> You are required to declare your manpower details using the "Permissions and Manpower Declaration" link at <https://covid.gobusiness.gov.sg>

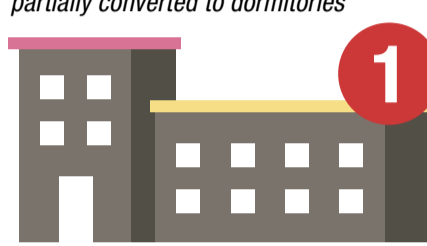


## STEP 2 CHECK THAT YOUR COMPANY MEETS COVID-SAFE RESTART CRITERIA

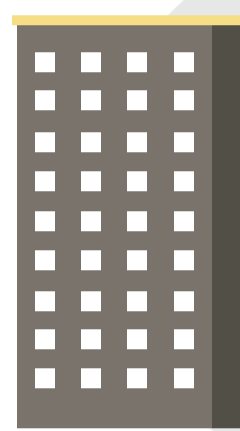
### 2A: ACCOMMODATION – Where should workers be staying?

All workers deployed to work should stay in cleared accommodation.

**1 FACTORY-CONVERTED DORMITORIES (FCDs)**  
Industrial or warehouse developments partially converted to dormitories



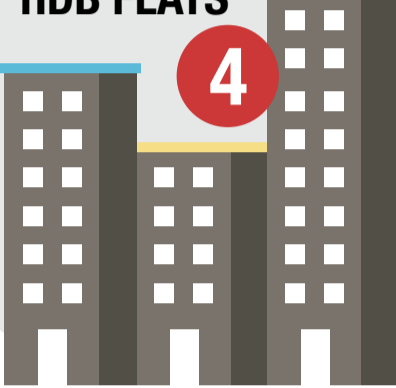
**2 PURPOSE-BUILT DORMITORIES (PBDs)**  
Dormitories specifically built to house foreign workers



**3 PRIVATE RESIDENTIAL PREMISES (PRPs)**



**4 HDB FLATS**



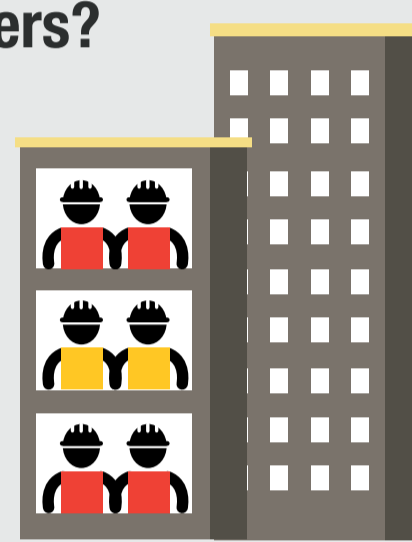
To check dorm clearance schedule [CLICK HERE](#)

### 2A: ACCOMMODATION – How should I segregate my workers?

- Stay in HDB/PRP dedicated for their **EMPLOYERS**




- Stay in PBD/FCD:
  - Cohorted according to employers by room
  - Max of 2 employers per room
  - Employers with multiple rooms to co-locate these rooms on the same floor



Workers working on non-construction sites and construction sites should not stay together.

### 2B: TRANSPORTATION – How should my workers go to work?

Provide point-to-point transportation for your construction workers who are Work Permit or S Pass holders, with staggered pick up/drop off.

Workers Accommodation Type	Workplace	Require Dedicated Transport	Allowed to take Public Transport (MRT, Bus)	Allowed to take Private Hire Vehicles (PHVs) & Taxis	Allowed to commute by personal motorcycles or cars
HDB/PRP	Non-Construction site	✗	✓	✓ 	✓
	Construction site (incl. site office)	✓	✗		
PBD/FCD/GSFs <sup>(1)</sup>	Regardless of place of work	✓	✗	✓ Employers must: <ul style="list-style-type: none"> <li>• Work with dormitory operators to plan and coordinate pick-up times;</li> <li>• Pre-arrange and pre-pay for taxis/PHVs;</li> <li>• Comply with relevant Safe Management Measures</li> </ul>	✗

<sup>(1)</sup> GSFs are Government Source Facilities set by government for workers who have recovered from COVID-19 or decanted from dormitories.

### 2C: WORKERS – How should I ensure workers are ready to start work?

- 1 Ensure your workers install TraceTogether, SGWorkPass and FWMOMCare App

- 2 Educate your workers on Covid-Safe practices. Your workers must attend the **Covid-Safe workers training** within 4 weeks from work resumption



- 3 Update foreign workers' accommodation with MOM. Ensure that particulars of all workers are submitted for approval to resume work.

This includes full and part-time employees who work in site offices or are project engineers/managers/QPs

## STEP 3 APPLY TO BCA TO RESTART WORK

**Only firms which carry out construction site activities need to apply**

[CLICK HERE](#)



Apply to continue with site activities\* carried out at construction sites before restart of construction projects, firms to apply here.

\* Example of such activities include site maintenance, site security and site inspections as per **Annex A of BCA's Advisory**.



### How should I prepare my workers for Work Resumption?

#### SWAB TEST

- Non-construction site activities: Only required for S Pass and WP holders under construction sector.
- Non-active construction site maintenance: Required for all S Pass and WP holders under all sectors.
- You should not make private swab test arrangement(s) for your employee(s). Employers are to book the swab test appointments for your employee(s) on the Swab Registration System (SRS) via <https://swab.hpb.gov.sg/ext/login.aspx> (Please refer to <https://go.gov.sg/bca-circular-srs> for more information).
- Employees may start work while waiting for their swab tests, unless they are staying in dormitories that have not been cleared.
- Employees are required to go for periodic routine swab test.
- Work pass holders must ensure their **AccessCode** is **'GREEN'** to start work.

If you have obtained BCA's approval for your workers but are still encountering problems, please email to [BCA\\_SafeWorkforce@bca.gov.sg](mailto:BCA_SafeWorkforce@bca.gov.sg)

#### Staggered Rest Day

- Employers should
  - Log in to MOM's **Safe@Work** system to select a rest day between Mon to Saturday for workers
  - Inform workers of their designated rest day
  - Make necessary arrangements to help your workers adjust to the designated rest day

For details: [www.mom.gov.sg/eservices/services/safe-work](http://www.mom.gov.sg/eservices/services/safe-work) and [www.mom.gov.sg/covid-19/frequently-asked-questions](http://www.mom.gov.sg/covid-19/frequently-asked-questions)



## PLEASE CLICK BELOW FOR OTHER GUIDES

[CONSTRUCTION PROJECTS/ SUPPLY WORK](#)

[RENOVATION PROJECTS](#)

[LANDED HOUSING PROJECTS](#)



Contact BCA at [bca.gov.sg/feedbackform/](mailto:bca.gov.sg/feedbackform/)



Visit BCA's website at [www1.bca.gov.sg/COVID-19](http://www1.bca.gov.sg/COVID-19)



Subscribe to BCA's Telegram channel at [www.t.me/BCASingapore](https://t.me/BCASingapore)